

COLLEGE PREPARATORY MIDDLE SCHOOL



“A Nurturing Community for the Middle School Learner.”

Christina M. Callaway, M.A., PPS
Mitchell S. Miller, M.A., Ed.S., PPS

PRESENTATION OUTCOMES

- Who are We?
- What is a Charter School?
- What is Offered at CPMS?
- How to Enroll?



CO-FOUNDERS/ADMINISTRATORS



**CPMS Co-Directors
Christina M. Callaway & Mitchell S. Miller**

WHAT IS A CHARTER SCHOOL?

Charter Schools...

- Open to the public;
- Publicly funded;
- Tuition-free;
- Must comply with both state and federal educational mandates;
- Participate in state testing;
- Employ credentialed teachers.

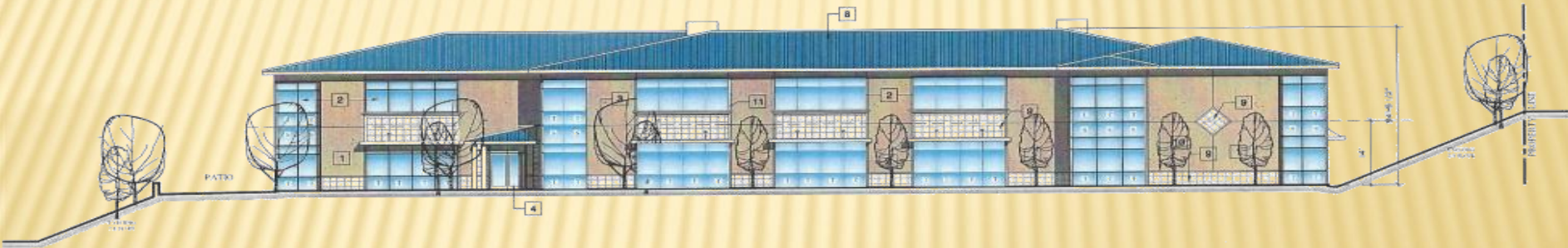


CPMS CHARTER

- **State Board of Ed (SBE) Approved**
 - March 2018
 - Authorizer/Oversight
- **Serving Grades 5-8**
 - 2019-20 Enrollment: 400 students
 - 100 students per grade
- **Direct Funded Charter**
- **LEA**
 - Curriculum
 - Employment



CPMS: NEW MODERN FACILITY



10269 Madrid Way, Spring Valley, CA 91977

CPMS: NEW MODERN FACILITY


2018-19: Temporary Facility (5150 Jackson Dr)

- Max capacity: 240 students
 - 60 students per grade level (Gr 5-8)

2019-20: New Facility (10269 Madrid Way)

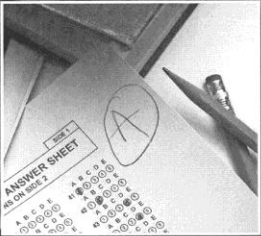
- Max capacity: 500 students
 - Address waitlists (+125)
- Modern, safe, designed specifically for middle school use
 - State of the art facility
 - Expand program offerings
- Meets community demand in La Mesa-Spring Valley
- Occupancy expected Spring 2019

HISTORY OF STRONG ACADEMIC ACHIEVEMENT


CALIFORNIA TITLE COMPANY www.CALTITLE.com

San Diego County TOP SCHOOLS

Scores & Ranking for 2012-2013
Academic Performance Index (API) Report



The Academic Performance Index has a scale from 200 to 1,000, based on how well the students score on California standardized tests.

"*" means this API is calculated for a small school or LEA, defined as having between 11 and 99 valid Standardized Testing and Reporting (STAR) Program test scores included in the API. The API is asterisked if the school or LEA was small in either 2012 or 2013. APIs based on small numbers of students are less reliable and therefore should be carefully interpreted.

"B" means the school did not have a valid 2012 Base API and will not have any growth or target information.

"C" means the school had significant demographic changes and will not have any growth or target information.

New schools, alternative, continuation schools and those with 100 or fewer students were not included.

School type: "E" Elementary, "M" Middle, "H" High

Information obtained from the California Department of Education

This information is provided solely as a courtesy by California Title Company. It is deemed reliable, but not guaranteed. For the latest Title news and information go to www.caltitle.com.

San Diego Academic Performance Index (API) Report

MIDDLE SCHOOLS		TOP 20 SCHOOLS		
School District	School Name	2013 API	2012 API	Change
Rancho Santa Fe Elementary	R. Roger Rowe Middle	957	955	2
Poway Unified	Mesa Verde Middle	944	948	-4
Mountain Empire Unified	College Preparatory Middle	941	924	17
San Diego Unified	Marshall Middle	934	934	0
Coronado Unified	Coronado Middle	923	919	4
Poway Unified	Oak Valley Middle	921	927	-6
San Marcos Unified	San Elijo Middle	919	921	-2
Carlsbad Unified	Aviara Oaks Middle	917	923	-6
Cajon Valley Union	Hillsdale Middle	904	915	-11
San Diego Unified	Challenger Middle	904	908	-4
San Diego Unified	Standley Middle	904	919	-15
San Diego Unified	Muirlands Middle	902	913	-11
Poway Unified	Bernardo Heights Middle	900	907	-7
Vista Unified	Vista Magnet Middle School of Technology	897	905	-8
Poway Unified	Black Mountain Middle	895	899	-4
San Marcos Unified	Woodland Park Middle	888	888	0
Sweetwater Union High	Rancho del Rey Middle	887	900	-13
San Diego Unified	Lewis Middle	886	892	-6
Poway Unified	Twin Peaks Middle	885	897	-12
San Diego Unified	Correia Middle	884	889	-5

HIGH SCHOOLS		TOP 20 SCHOOLS		
School District	School Name	2013 API	2012 API	Change
Lakeside Union Elementary	River Valley Charter	932	937	-5
San Diego Unified	Scripps Ranch High	914	900	14
San Diego Unified	Preuss School UCSD	888	893	-5
Poway Unified	Del Norte High	881	865	16
Coronado Unified	Coronado High	877	873	4
Escondido Union High	Classical Academy High	876	855	21
Poway Unified	Westview High	869	872	-3
Poway Unified	Poway High	868	871	-3
San Diego Unified	La Jolla High	867	854	13
San Diego Unified	Kearny International Business	866	887	-21
Poway Unified	Rancho Bernardo High	865	850	15
Vista Unified	Guajome Park Academy Charter	860	861	-1
San Marcos Unified	San Marcos High	857	863	-6
Sweetwater Union High	Olympian High	853	850	3
Escondido Union High	Escondido Charter High	850	849	1
San Diego Unified	Mt. Everest Academy	850	873	-23
Sweetwater Union High	Bonita Vista Senior High	848	857	-9
San Diego Unified	San Diego International Studies	847	870	-23
San Marcos Unified	Mission Hills High	847	841	6
San Diego Unified	Mira Mesa High	846	860	-14

This information is provided solely as a courtesy by California Title Company. It is deemed reliable, but not guaranteed. For the latest Title news and information go to www.caltitle.com.

College Prep Middle School – 3rd Highest Ranking Middle School in SD County

HISTORY OF STRONG ACADEMIC ACHIEVEMENT

San Diego Academic Performance Index (API) Report

MIDDLE SCHOOLS		TOP 20 SCHOOLS		
School District	School Name	2013 API	2012 API	Change
Rancho Santa Fe Elementary	R. Roger Rowe Middle	957	955	2
Poway Unified	Mesa Verde Middle	944	948	-4
Mountain Empire Unified	College Preparatory Middle	941	924	17
San Diego Unified	Marshall Middle	934	934	0
Coronado Unified	Coronado Middle	923	919	4
Poway Unified	Oak Valley Middle	921	927	-6
San Marcos Unified	San Elijo Middle	919	921	-2
Carlsbad Unified	Aviara Oaks Middle	917	923	-6
Cajon Valley Union	Hillsdale Middle	904	915	-11
San Diego Unified	Challenger Middle	904	908	-4
San Diego Unified	Standley Middle	904	919	-15
San Diego Unified	Muirlands Middle	902	913	-11
Poway Unified	Bernardo Heights Middle	900	907	-7

HISTORY OF STRONG ACADEMIC ACHIEVEMENT

California Assessment of Student Performance and Progress (CAASPP - 2018)

	<u>State</u>	<u>County</u>	<u>District</u>	<u>CPMS</u>
ELA	50%	56%	53%	88%
Math	39%	44%	40%	78%

% - Met or Exceeded State Standards

WHAT WE OFFER AT CPMS:

- An academically demanding program with a strong literacy base.
 - Yes, we do assign a fair amount of homework.
- A positive college bound focus
- Small class size
 - 25 students per class
- Differentiated Instruction
- Data-Driven Decision Making
- Technologically Integrated Learning



WHAT WE OFFER AT CPMS:

- Full compliment of core subject matter
 - New California State Standards
 - Enrichment
 - Supports for Student Success
- Preparation for high school-level coursework
 - Study Skills/Organization Skills
 - Articulation with Charter High Schools

WHAT WE OFFER AT CPMS:

College Prep maintains
HIGH EXPECTATIONS
for
ALL STUDENTS.



The rigorous college preparatory curriculum is
challenging and students should come
PREPARED to WORK HARD & SUCCEED!

WHAT WE OFFER AT CPMS:

- A Single School Culture organized for learning.
 - Tiger Pride!!!
 - CPMS-LMSV Dress Code
- Development of good character and positive citizenship for the 21st century.
 - BULLIES BEWARE!!!
- Home – School Partnership.
 - Collaboration with community organizations.



WHAT WE OFFER AT CPMS:

- Positive Behavior Supports
 - Recognize, Reward, Reinforce
 - PREP Tickets/Drawings
 - Prepared
 - Respectful
 - Engaged
 - Professional
 - College Bound Celebrations
- Tigers Den
- Associated Student Body (ASB)
- Parent-Teacher-Student-Association (PTSA)



WHAT WE OFFER AT CPMS:

- Traditional school calendar
- 55-minute bell schedule (Gr 6-8)
- Block schedule (Gr 5)
- Quarter system
- Lunch service
- After-School Tutorial (optional)
- After-School Activities



COLLEGE PREP IN MIDDLE SCHOOL???

✖ You may be wondering:

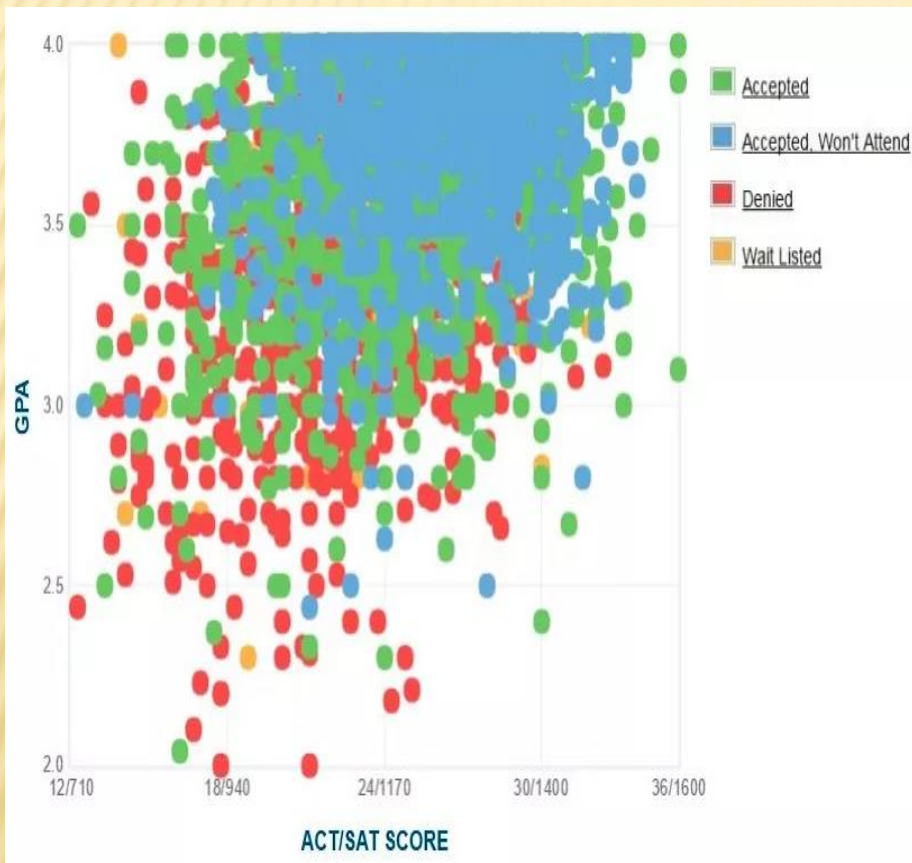
“Is middle school too early to start preparing
for high school and beyond???”



CALIFORNIA COLLEGE ADMISSIONS (2016)

- ✘ The number of applicants received by UC San Diego was second only to UCLA, which drew 119,326 applications, a 6 percent jump from last year.
- ✘ The UC San Diego applicants include 84,198 prospective freshmen, up 7.9 percent from 2015.
- ✘ At San Diego State University, 83,316 undergrads applied marking the fifth record-setting year in a row.
- ✘ The applicants include 59,953 from first-time freshmen, a 3 percent increase.
- ✘ SDSU's admitted student profile: GPA – 3.82; SAT – 1159; ACT - 25
- ✘ Cal State San Marcos University had a record 23,785 applications for the fall semester.

ADMISSIONS STATISTICS (2018)



SDSU



UCSD

ENROLLMENT FOR 2019 - 2020

- Online Application: www.MyCPMS.net
 - “Enrollment” Tab
 - Due March 25th by 3:00 pm (No Exceptions)
- Lottery
 - Completed Applications > Available Spaces
 - Friday, March 29th, 2019 at 3:00 p.m.
 - Determines Enrollment /Waiting List
 - Applications submitted after the lottery will be placed on the waiting list (per grade) based upon submission date/time.
 - Families will be notified as space becomes available.





College Preparatory Middle School

A California Non-Profit Public Charter School



A Nurturing Community for the Middle School Learner
Grades 5-8

[HOME](#)

[ABOUT COLLEGE PREP](#)

[ENROLLMENT](#)

[STAFF](#)

[SUPPORT/PTSA/ASB](#)

[NEWS & EVENTS](#)

[SCHOOL INFORMATION](#)



WELCOME to College Prep!!!



[Apply Now for 2019-20!](#)

["About CPMS" Presentation \(2019-20\)](#)



[CAASPP Results](#)



[Tiger's Tale](#)

[Parent/Student Portal Instructions](#)

[Parent Portal](#)

[Student Portal](#)



[Teacher Calendars](#)

ENROLLMENT FOR 2019 - 2020

www.MyCPMS.net

- ✕ All Things CPMS, All The Time
- ✕ Enrollment Info/Dress Code Info
- ✕ School Calendar/Bell Schedule
- ✕ Teacher Websites/Calendars
 - ✕ Student Handbook
 - ✕ Parent Portal
 - ✕ Tiger's Tale (Blog)
 - ✕ Student Resources



ENROLLMENT FOR 2019 - 2020

☺ First Day of School ☺

Tuesday, September 3rd, 2019

Literacy Rocks!!!

8:00 a.m. – 2:35 p.m.



GET READY TO EARN YOUR STRIPES!

